

Voler SYSTEMS

Wireless Medical Device Checklist

POWER

- What size battery?
- What is the appropriate battery lifetime?
- How often do various parts of it need to be on?
- What is the maximum current draw? (also determines battery size)
- How will the battery be charged: wirelessly, plugged in or replaceable batteries?

WIRELESS

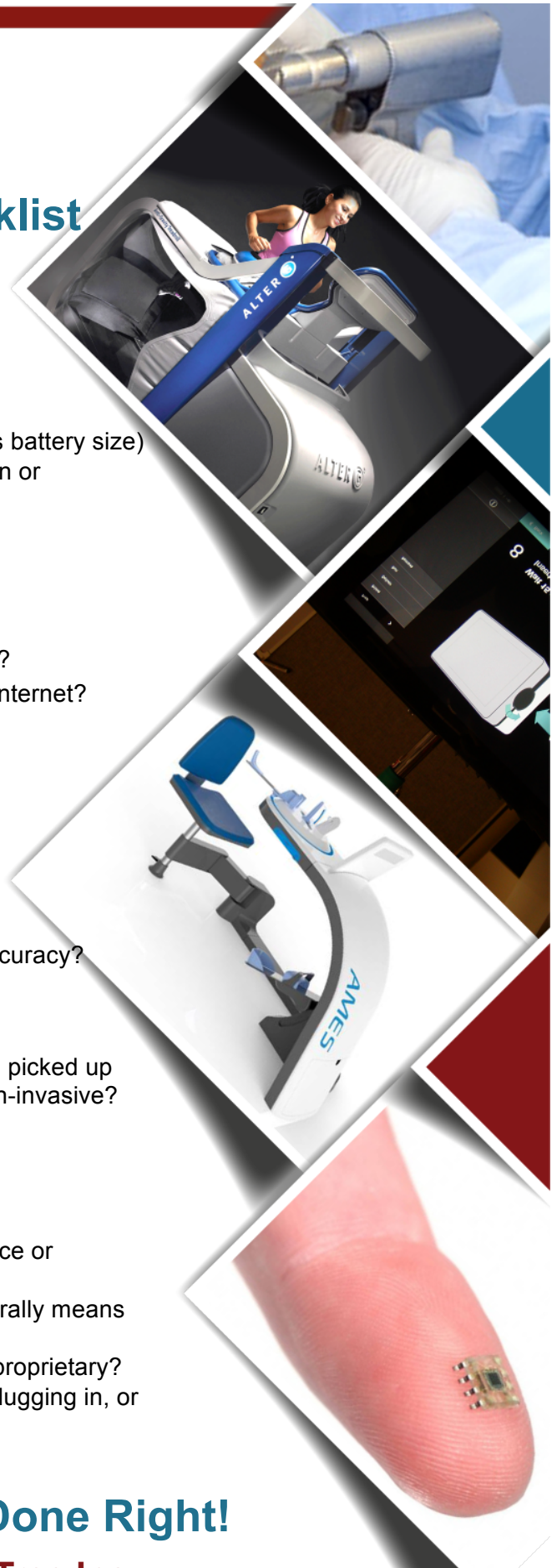
- What is the appropriate type of wireless transmission?
- Is a gateway needed or will it connect directly to the Internet?
- What is the impact on the battery, size and lifetime?
- What type and size antenna is needed?
- How often does it need to be on?

SENSORS

- What is the appropriate tradeoff between cost and accuracy?
- What accuracy and sensitivity is needed?
- Is calibration needed?
- How will the sensors be tested and calibrated?
- If there are biological sensors, how will the signals be picked up from the body, contact or non-contact, invasive or non-invasive?

SOFTWARE

- Where does the data analysis take place, on the device or elsewhere?
- How smart does the device have to be (smarter generally means more power and larger)?
- What is the protocol for communication, standard or proprietary?
- How will software updates be done, over the air, by plugging in, or not at all?



New Product Development ... Done Right!

Voler Systems Division of Strawberry Tree Inc
408-245-9844 • www.volersystems.com